

DC Link Capacitors DCM-MT Series



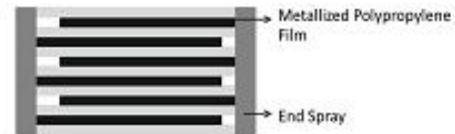
APPLICATION:

- The DC Link capacitors from **DCM-MT** series are suitable for DC Link and DC Filter applications in Power converters for: Welding Equipment. (e.g. Inverter Welding Machine), Induction Heating Equipment, Traction and industrial drives, Solar power inverters, Electric vehicle inverters

FEATURES:

- High Current Capability, Low ESR
- Customised Terminations
- Dry construction, PU resin filled.
- High Life expectancy, very low Failure Rate
- Flame retardant UL94 - V0, ROHS compliant

Construction:

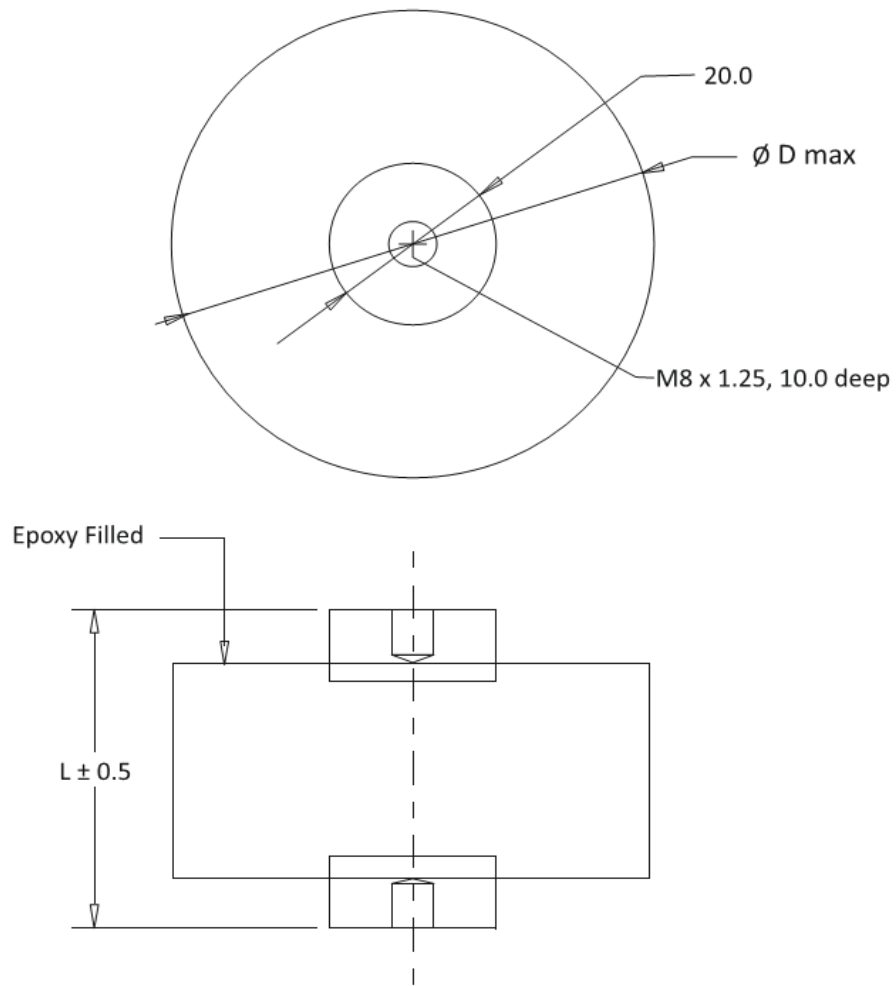


REFERENCE STANDARD: IEC 61071

BASIC SPECIFICATIONS:

Capacitance Range	20 μ F to 265 μ F
Rated voltage (VDC)	700 VDC to 1800 VDC
Capacitance Tolerance	\pm 5% (J), \pm 10% (K)
Dielectric	Polypropylene Film
Electrodes	Vacuum deposited Zinc Aluminum Heavy Edge
Casing	Polyester tape wrapped
Encapsulation	Thermosetting Resin
Terminals	Brass Stud
Dissipation factor (Tan d)	\leq 0.001 at 100Hz
Test voltage between terminals (Vtt)	1.5 X rated voltage for 10 sec.
Withstanding AC Voltage between terminals & case (Vtc)	3000 VAC for 10 sec.
Climatic category	40/105/56

CAPACITOR DRAWING & DIMENSIONS



Neotronics PRIVATE LTD.

68, Hadapsar industrial Estate, Hadapsar, Pune 411013

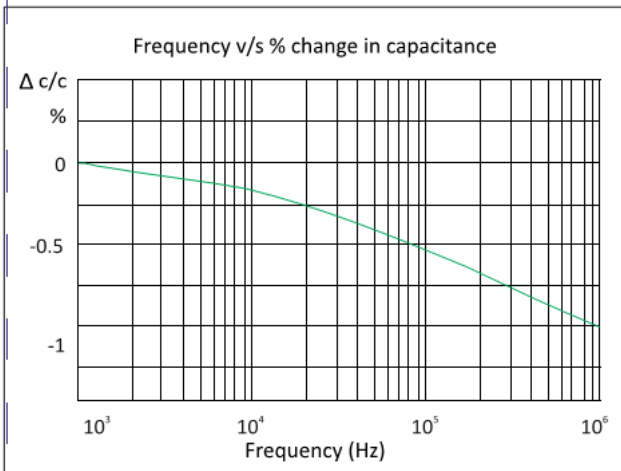
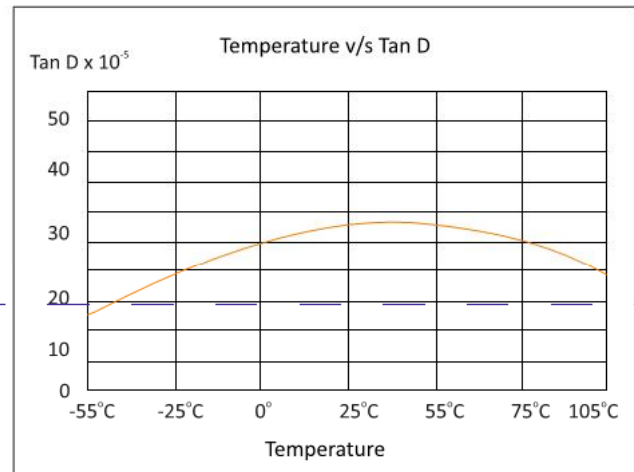
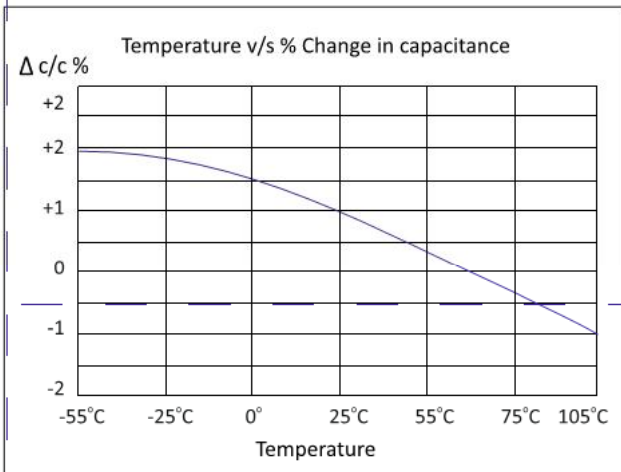
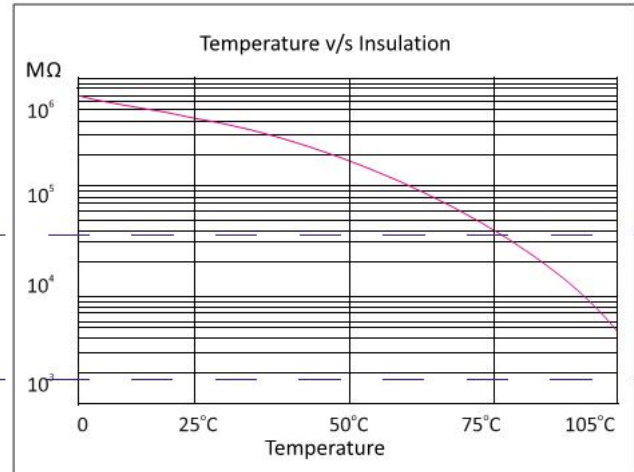
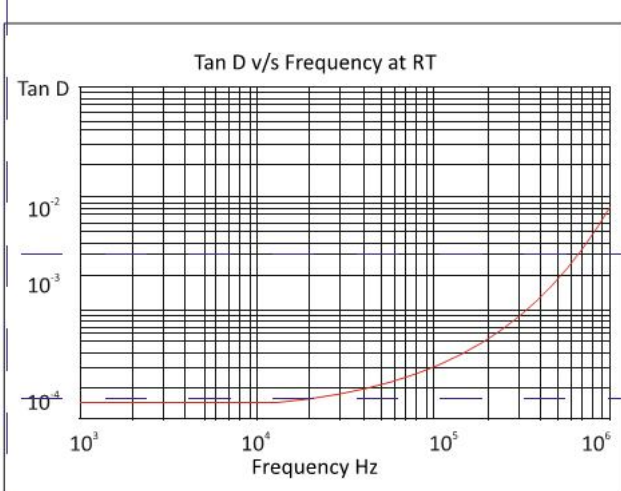
STANDARD CAPACITOR VALUES AND DIMENSIONS

Rated Voltage (VDC)	Capacitor value at 1Khz (MFD)	Case Size (D x L)	Typical ESR (mΩ) 1KHz	Ripple current rating Irms at 10Khz and 100Khz				
				25°C	45 °C	65 °C	85 °C	105 °C
700	90	85 X 51	0.65	60	52	44	30	7
	145	85 X 63	0.75	64	55	46	32	8
	200	85 X 76	0.95	58	50	42	29	7
	265	85 X 91	1.65	51	45	37	26	6
900	85	85 X 51	0.58	56	48	39	27	5
	120	85 X 63	0.78	62	54	47	34	8
	160	85 X 76	0.97	57	51	43	30	9
	200	85 X 91	1.70	50	43	35	25	5
1000	55	85 X 51	0.80	57	49	41	25	7
	70	85 X 51	1.0	58	50	42	29	7
	100	85 X 63	0.80	59	51	43	30	7
	130	85 X 76	1.18	52	45	37	27	6
	150	85 X 91	2.21	46	40	33	23	5
1200	60	85 X 51	1.05	48	41	35	25	6
	80	85 X 63	1.19	49	43	35	25	6
	110	85 X 76	1.46	46	40	33	23	5
	122	85 X 91	2.80	38	33	27	19	5
1400	30	85 X 51	1.28	42	37	30	21	5
	45	85 X 63	1.47	43	37	31	22	5
	60	85 X 76	1.87	41	35	29	21	5
	75	85 X 91	3.81	35	30	25	18	4
1600	28	85 X 51	1.48	41	36	30	21	5
	40	85 X 63	1.71	41	36	30	21	5
	50	85 X 76	2.18	39	34	28	20	5
	60	85 X 91	4.56	32	28	23	16	4
1800	20	85 X 51	1.69	38	33	27	19	5
	28	85 X 63	1.86	39	33	28	20	5
	40	85 X 76	2.81	33	29	24	17	4
	46	85 X 91	5.63	29	25	21	15	3

Neotronics PRIVATE LTD.

68, Hadapsar industrial Estate, Hadapsar, Pune 411013

TYPICAL PERFORMANCE GRAPH



Neotronics PRIVATE LTD.

68, Hadapsar industrial Estate, Hadapsar, Pune 411013